

ROADMAP TO CURE CHD2

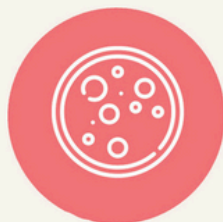
IDENTIFY & DEFINE PATIENTS

The first step is to identify patients living with a CHD2 mutation. This is done through genetic testing, data collection programs and natural history studies.



DEVELOP MODELS OF CHD2

Researchers are able to better understand CHD2 by mimicking it in various "models" of the disease. These models may include mice, zebrafish, organoids, or iPSCs (induced pluripotent stem cells).



STUDY MODELS OF CHD2

After a model of CHD2 is developed, researchers can then study it in order to gain insights into the disease, including how to treat it.



TEST THERAPIES

Therapies can then be tested on CHD2 models to find new treatments (including new and repurposed drugs and gene therapies).



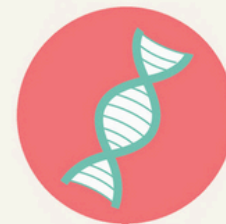
INVOLVE PATIENTS

Opportunities in the form of biosample donations, clinical trial enrollment, or participation in data collection is critical to advance research.



REACH A CURE

Finding a cure for CHD2 is our number one goal. In order to reach this goal, we need the support of the community - including patients, caregivers, researchers, medical professionals, and advocates.



CCC
COALITION
TO CURE CHD2

www.CureCHD2.org