

# SEIZURE CLUSTERS



## ABOUT SEIZURE CLUSTERS



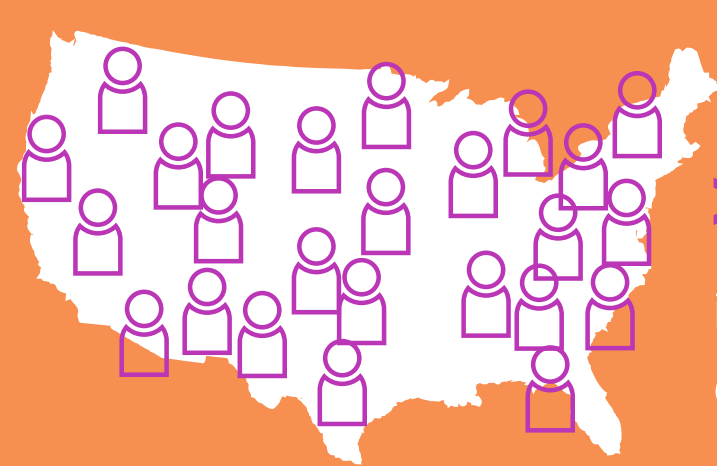
Seizure clusters are episodes of frequent seizure activity that are distinct from a patient's usual seizure pattern.<sup>1</sup>



Seizure clusters are a seizure emergency, where patients experience multiple seizures with a recovery in between over a number of hours or days.<sup>1</sup>



Other names for seizure clusters include acute repetitive seizures (ARS), serial seizures, crescendo seizures, and seizure flurries, which highlight the repetitive nature of the seizures in a cluster.<sup>2</sup>



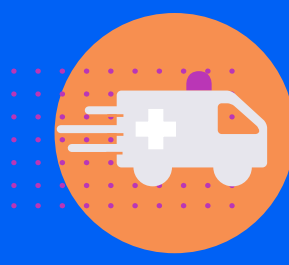
It is estimated that

**> 150,000 people**

in the U.S. with uncontrolled epilepsy also experience seizure clusters<sup>3,4,5</sup>

## THE IMPACT OF SEIZURE CLUSTERS

A seizure may only last 1 to 2 minutes, but a seizure cluster can typically last for hours, and an untreated seizure cluster can have potentially serious consequences, including:<sup>2,6,7</sup>



### Hospitalization

Seizure clusters have been linked with a high rate (73%) of emergency seizure-related hospitalization<sup>8</sup>



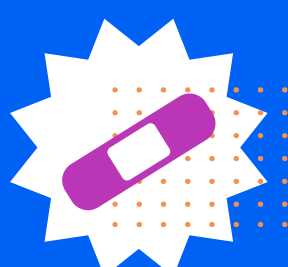
### Status epilepticus

Seizures lasting longer than 5 minutes or occurring close together, and the person doesn't recover between seizures<sup>9,10</sup>



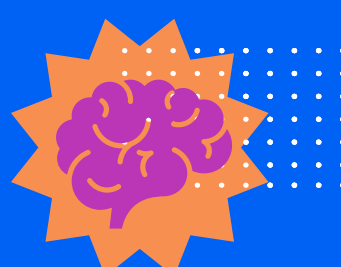
### Mortality

The risk of death is 3.5 times greater for patients with seizure clusters than the general epilepsy population<sup>11</sup>



### Physical injury

30% of patients report bodily injury linked to seizures<sup>12</sup>



### Neurological damage

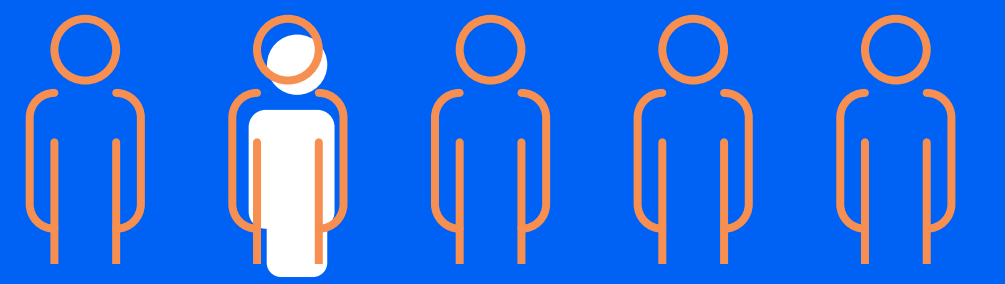
Repetitive seizures have been associated with long-term brain damage and cognitive decline<sup>13</sup>



For patients with commercial insurance, the average cost of an epilepsy-related ambulance ride<sup>14</sup> is about **\$4,000**



If a patient is hospitalized, the average costs increase dramatically to about **\$38,000** per hospitalization<sup>14</sup>

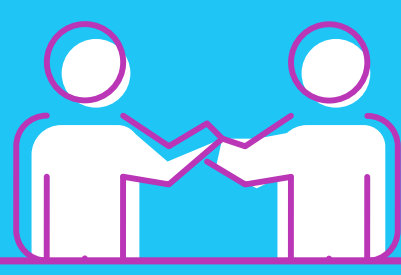


**ONLY 1 IN 5 PATIENTS** with seizure clusters report using a rescue medication<sup>1</sup>



Instead, most seek out ER care<sup>1</sup>

## TREATMENT OPTIONS FOR SEIZURE CLUSTERS



For both patients and their caregivers, seizure clusters may:

- limit the ability to work or study<sup>1</sup>
- interfere with daily activities, family & social life<sup>1</sup>
- negatively affect mood<sup>1</sup>

**3 OF 4 PATIENTS**

live in fear of having their next seizure cluster<sup>1</sup>



### Rescue medications



A rescue medication is different from daily epilepsy medications already taken to manage epilepsy.<sup>15</sup>



Use prescribed rescue medication when needed to treat a seizure cluster.<sup>16</sup>



Patients should keep taking daily seizure medications as directed by their doctor.<sup>16</sup>

### References

- Penovich PE, Buelow J, Steinberg, et al. Burden of seizure clusters on patients with epilepsy and caregivers survey of patient, caregiver, and clinician perspectives. *The Neurologist*. 2017;22:207-214.
- Jafarpour S, Hirsch LJ, Gaínza-Leina M, et al. Seizure cluster: Definition, prevalence, consequences, and management. *Seizure*. 68:9-15.2019.
- Zack M, R Kobau. National and State Estimates of the Numbers of Adults and Children with Active Epilepsy. *CDC MMWR*. 2017. 66:821-825.
- Kwan P, M Brodie. Early Identification of Refractory Epilepsy. *NEJM*. 2005. 342:314-319.
- Chen B, Choi H, Hirsch L, et al. Prevalence and risk factors of seizure clusters in adult patients with epilepsy. *Epilepsy Res*. 2017;133:98-102.
- McKee H, A Bassel. Outpatient Pharmacotherapy and Modes of Administration for Acute Repetitive and Prolonged Seizures. *CNS Drugs*. 2015. 29:55-70.
- Ferastraaru V. Termination of seizure clusters is related to the duration of focal seizures. *Epilepsia*. 57(6):889-895, 2016.
- Haut SR, Shinnar S, Moshé SL. Seizure clustering: risks and outcomes. *Epilepsia*. 2005;46(1):146-149.
- Haut S. Seizure clusters: characteristics and treatment. *Current Opinion Neurology*. 28:143-150, 2015.
- Status Epilepticus. Epilepsy Foundation. Accessed October 1, 2019. <https://www.epilepsy.com/learn/challenges-epilepsy/seizure-emergencies/status-epilepticus>.
- Sillanpää M, Schmidt D. Seizure clustering during drug treatment affects seizure outcome and mortality of childhood-onset epilepsy. *Brain*. 2008;131(Pt 4):938-944.
- Buck D, et al. Patients' Experiences of Injury as a Result of Epilepsy. *Epilepsia*. 38(4):439-444, 1997.
- Cereghino JJ, Mitchell WG, Murphy J, et al. Treating repetitive seizures with a rectal diazepam formulation: a randomized study. The North American Diastat Study Group. *Neurology*. 1998;51(5):1274-1282.
- Data on file. UCB, Inc. IBM MarketScan Commercial Claims research database (CCMC 2008-2018 v0.1).
- Poukas V, Pollard J, Anderson C, et al. Rescue Therapies for Seizures. *Curr Neural Neurosci Rep*. (2011) 11:418-422.
- Using Rescue Treatments. Epilepsy Foundation. Accessed September 24, 2019. <https://www.epilepsy.com/learn/managing-your-epilepsy/using-rescue-treatments>.